



Starfish[®]
GREATHEARTS FOUNDATION
LIFE, HOPE AND OPPORTUNITY

ANNUAL REPORT



2020

Nature of report



Our 2020 annual report describes the Foundation's financial highlights, as well as administrative, governance and operational activities within the current South African context that the foundation operates in.

A full set of audited financial statements can be made available from the Foundation upon written request to the Chief Executive Officer.

A variety of stakeholders have an interest in our activities, and these influenced the Foundation's performance in the financial year 1 April 2019 to 28 February 2020. As such, we have also included some narrative reporting that may extend beyond these dates on account of publication timing.

with limited resources, the Foundation makes every effort to include comprehensive reporting on all areas associated with its work.

On account of the Foundation necessarily utilising resources in response to the 2020 national State of Disaster in South Africa (Covid-19), costs have been contained across operational and non-operational areas of the Foundation's work. The Foundation is, however, satisfied that the level of reporting contained here allows readers to have sight of the foundation's operational and financial performance.

As a non-profit and public benefit organisation



Contents

| | |
|------------------------------|----|
| Chairperson's report | 4 |
| Letter from our Greathearts | 5 |
| Meet the Team | 6 |
| Vision, mission and values | 7 |
| Focus areas | 8 |
| Current reality | 9 |
| Starfish mandate | 10 |
| Highlights for the year | 11 |
| Starfish beneficiaries | 12 |
| CBO highlights | 14 |
| What is our Why? | 15 |
| Financial review | 16 |
| Starfish Partners and Donors | 17 |
| The Starfish parable | 21 |
| Contacts | 22 |



Chairperson's report

I am writing this report at a time of uncertainty and sadness. The scourge of COVID-19 continues to affect the entire nation and the globe. It has been a tragedy of epic proportions and sadly we continue to receive daily reports of ongoing infections and fatalities.

Our immediate priority and concern during the early days of the pandemic was to ensure appropriate support to protect the lives and livelihoods of the Starfish employees and those in the communities in which we operate.

On behalf of the board, our gratitude is extended to the teams across the Community Based Organizations who worked so diligently and with absolute dedication to maintain operational momentum especially during the total lockdown. This ensured that though there was a 36% drop in financial support, the CBO's emerged from the most difficult phase of the pandemic in a relatively stable position, albeit others experienced retrenchments, and were well placed to return to normal operations when the economy recovers.

We are far from being out of the woods. The health and economic impacts on South Africa are unprecedented, and the pandemic has challenged Starfish Greathearts Foundation in a way that no-one could have anticipated. And we were required to address new and urgent issues outside its usual scope of work.



Sbu Manqele

Sadly, a few of our beneficiaries lost parents resulting in some being double orphans and others becoming child headed households. This has been the most difficult part of the year in dealing with the pandemic, and the board of directors extends its sincere condolences to the beneficiaries.

While the effects of COVID-19 will persist for some time, we believe some level of recovery will become apparent in the 2021 calendar year, improving into 2022. Initiatives to future-fit our organization are well underway to appropriately refocus and clarify our mandate to ensure that we can still support vulnerable and orphaned children.

I am deeply grateful to the global chapters, donors, government, stakeholders and partners for their continued support. Umuntu ngumuntu ngabantu "we ARE because of your continued support" –



A letter from the Greathearts



South Africa and the rest of the world were severely impacted by the COVID-19 pandemic and ensuing social and economic disruptions.

Though the pandemic started outside of this current reporting year, the year was already characterised by a tough economic environment where we saw the country slipping into a technical recession in the fourth quarter of the year and Moody's downgrading South Africa to junk status.

The President of South Africa declared a national state of disaster in response to the unprecedented COVID-19 pandemic in March 2020 and the full impact of the pandemic will only be experienced in FY2021 and beyond.

In our quest to prepare for the impact of the COVID-19 pandemic and with the assistance of Guidehouse, Starfish will be implementing the following in the FY2021

- Reviewing the environment's impact on our ability to continue supporting our beneficiaries through our partner Community Based Organisations,
- Review our stakeholders' and Donors interests, needs, expectations and commitments,
- Review our strategic risks which are significant to our sustainability
- Follow a prioritisation process in line with the limited financial resources
- Implement an effective monitoring and reporting system to quantify the value of the support we provide to our beneficiaries.

We aim to continue Starfish's 20 year legacy of supporting orphaned and vulnerable children with the support of loyal donors and stakeholders built on trust, respect, transparency, constructive engagement and ethical business practices.

Starfish's priority is the wellness of our people. All our employees were empowered to work from home while ensuring continuity in all support related to beneficiaries to ensure that none went hungry or without primary healthcare.

Our sincere gratitude is extended to the board who continue to guide and provide dedicated oversight support. We thank our stakeholder universe, whether partner, employee, CBO, beneficiary, government, or community. "One Starfish at a time".



Meet the team



Nqobile Shabalala
Programme Manager



Melissa Chetty
Operations Manager



Mpiliso Skosana
Media Officer



Primrose Chamboko
Finance Manager



Bongwiwe Duma
Programme Co-ordinator



Queen Mokgokong
Administrator



Mongezi Soxujwa
Communication and
Development Officer



Anna Shonhiwa
Jnr Bookkeeper

Starfish vision, mission and values



Starfish Greathearts Foundation works in partnerships with community-based organisations to strengthen their ability and capacity to deliver best-practice, systemic Child & Youth Care services to vulnerable, orphaned and at-risk children in South Africa.

Our ultimate joint success would be a South Africa where all children are valued, protected and empowered to realize their full potential.

Our vision of success

Children in South Africa are valued, protected and empowered to realise their full potential.

Mission

Starfish supports children orphaned or vulnerable in South Africa by working in partnership with community-based organisations.

Our values

Life

We believe in improving the lives of children

Hope

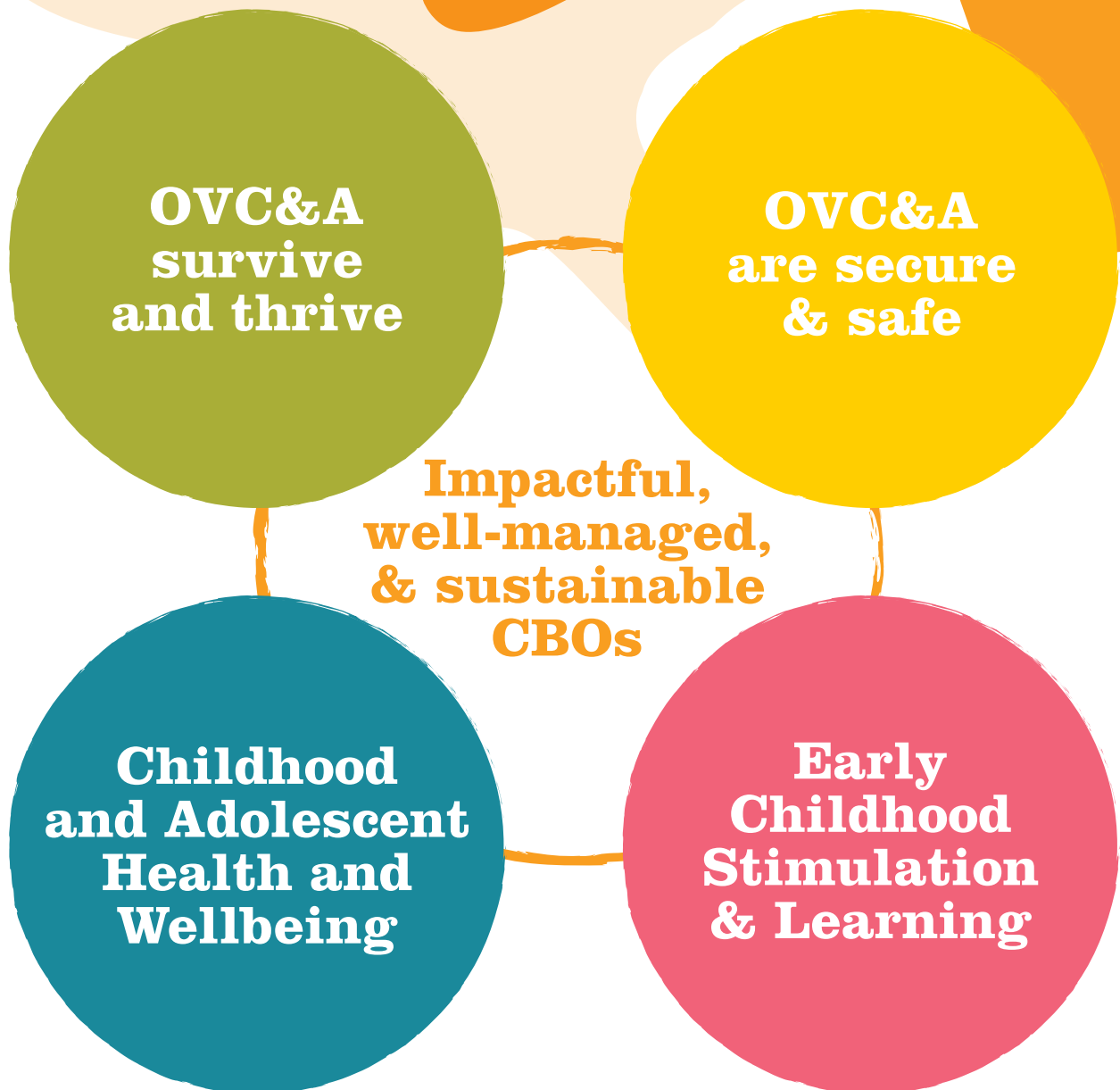
We have hope for a future where children are valued

Opportunity

We strive for equitable opportunities for all children

Our focus-areas

The Starfish Greathearts Foundation works with partner community-based organisations throughout South Africa to ensure orphaned and vulnerable children are increasingly valued, protected and empowered to realise their full potential.



The current reality

HIV

In 2019, an estimated **7.7 million people are living with HIV**, with **260,000 children (aged 0 to 14) were living with HIV in South Africa**, of whom only **47% were on Antiretroviral treatment**. Annual new infections have declined among South African children, from 25,000 in 2010 to 12,000 in 2019. This is mainly due to the success of prevention of mother-to-child transmission (PMTCT) programmes. The rate of mother-to-child transmission stood at 1.4% in 2019, down from 3.6% in 2011. This puts South Africa on track for eliminating mother to child transmission.

As it stands, for every child initiated on to treatment, 1.4 are newly infected with HIV. Children are also affected by HIV through the loss of family members. **In South Africa more than 2 million children have been orphaned by HIV and AIDS.**

Orphans are particularly vulnerable to HIV because of economic and social insecurities; they are often at risk of being forced into sex, have sex in exchange for support, and typically become sexually active earlier than other children.

The South African National Strategic Plan 2017-2022 aims to renew the focus on children, putting emphasis on eliminating new infections and building resilience in families. Starfish has aligned its operations to participate in the implementation of the national strategy.

Developmentally, malnutrition and low child-caregiver interaction are the two primary contributors to later social, emotional and cognitive impairment. Ensuring early identification of nutritional risks and encouraging better caregiver-child interactions have shown significant longitudinal impact internationally.



POVERTY

62%

OF CHILDREN ARE MULTIDimensionALLY POOR; 88% ARE LOCATED IN THE RURAL AREAS OF KZN, EC AND LIMPOPO; 68% OF POOR CHILDREN ARE BLACK AFRICAN



ORPHANS

OVER **2.8 million** ORPHANS IN SA

471 000

ARE DOUBLE ORPHANS

HEALTH

20%

OF CHILDREN LIVE FAR FROM A PRIMARY HEALTH CARE FACILITY

CHILD HEADED HOUSEHOLDS

55 000

CHILDREN IN CHILD HEADED HOUSEHOLDS BEFORE THE COVID PANDEMIC

33 000

CHILD HEADED HOUSEHOLDS

EDUCATION

OVER **1 million** CHILDREN LIVE FAR FROM SCHOOL

1.1 million

CHILDREN BETWEEN 3-5 YEARS DO NOT ATTEND ECD CENTERS

Starfish mandate

Always working in partnership with local community-based organisations (CBOs), with Starfish as the supporting funder and capacity-developer and the CBO as the direct service provider, Starfish ensures children are valued, protected and empowered to realise their dreams.

Minimally, a Starfish service-delivery partner must ensure all five child development elements are covered, to some extent, in their service provision offering:

- 1 Ensuring good health outcomes
- 2 Ensuring sufficient nutritional intake
- 3 Ensuring interactive and responsive care and language nutrition
- 4 Ensuring the minimization/ eradication of factors that may contribute to adverse childhood experiences
- 5 Ensuring good infancy stimulation and continued learning opportunities throughout the childhood continuum, but especially pre-school and adolescent ages

Home visits

Strengthening family environments for improved childhood outcomes across the nurturing care domains

Infant care & ECD

Support for young mothers - antenatal to 6-years of age

Ensuring healthy physical, emotional and cognitive foundations

Wellness wagon

Accessible Primary healthcare and support including sexual and reproductive health, communicable disease testing and referrals

Special emphasis is placed on service-delivery modalities:



Nurturing care framework

Highlights for the year



In 2020,
Starfish had
the following
impact:

13 000
CHILDREN
WERE SUPPORTED
IN 5 PROVINCES

13 000 children
were supported in 5 provinces

receiving daily meals, food parcels, school uniforms, stationery, nappies and care workers conducted supervisory home visits as part of the Starfish Wellness Programme.

Four Starfish Wellness Wagons

(Mobile Clinics) equipped with a qualified and experienced nurse **served 12 782 children with primary health care services** in KwaZulu-Natal, Mpumalanga and Eastern Cape.

13 CBOs received

support and capacity building through the Starfish Organisational Capacity Development Programme.



Starfish beneficiaries

Starfish currently supports over **13 000 children** annually through 13 CBOs nationwide.



The key beneficiaries of the programme are children between the ages of 0 – 18 years left orphaned or vulnerable by amongst other risks HIV and AIDS.

The following criteria guides the selection process for the beneficiaries:

- Maternal, paternal or double orphans
- Children from child or youth headed households
- Vulnerable children i.e. neglected, abused, living with sick, unemployed, aged, severely disabled or alcoholic parents
- Disaggregated into age groups:
 - 0 to 2 years;
 - 2 to 5 years;
 - 5 to 12 years;
 - 12 to 18 years
- Indirect beneficiaries include: Care workers, care givers and community members who receive training in primary health care, nutrition and food parcels



Starfish beneficiaries



CBO Highlights



Thy Kingdom care centre (Gauteng).

- Partnered with Ambassadors for Good to renovate the ECD Centre
- Continued payment of stipends for 5 OVC and 4 ECD care workers during the Covid-19 pandemic, also the provision of daily meals during the hard lockdown
- Funded the afterschool programme to ensure children's wellbeing and protection is served
- 375 beneficiaries received nutritional support, educational support, child protection and TB screening
- Continued operational support for Thy Kingdom
- Donated 7 laptops towards the library support and educational support programme for the 12 - 18-year-old OVC beneficiaries and for computer literacy lessons for Thy Kingdom staff



Thy Kingdom appreciates and honours Starfish Greathearts Foundation for the donation of 7 laptops for the library equipment support and education programme. The laptops will help improve computer skills of the OVC beneficiaries.

What is our Why?

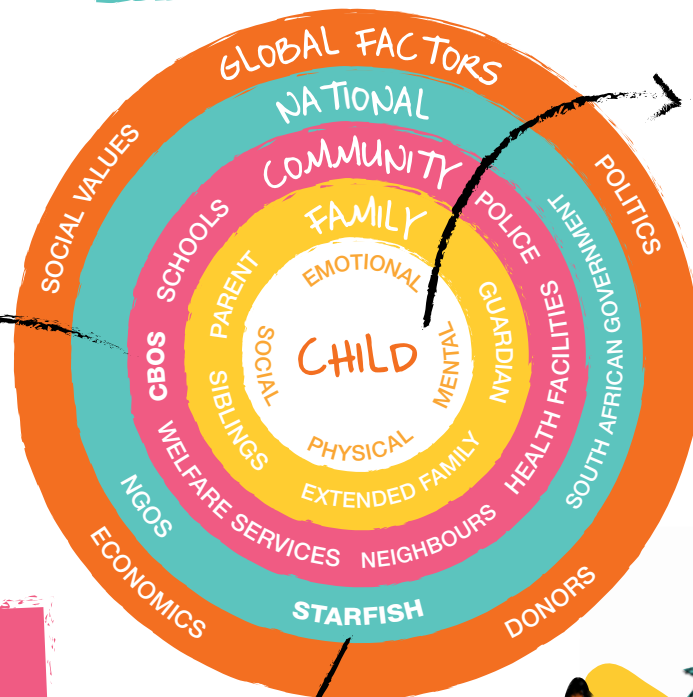
Over 2.8 million children are orphaned in South Africa and over 80% of these suffer from multidimensional poverty which is caused by lack or poor access to the following:

- Health (lack of access to primary health care facilities or poor facilities)
- Education (lack of access to early childhood and school facilities or substandard facilities)
- Nutrition (malnutrition)
- Protection
- Housing (adequate shelter with a roof and walls)

- WASH (inadequate water, disposal, sanitation and hygiene facilities)
- Information (access to information)

Social Infrastructure is therefore important to normal human development and that is why Starfish Greathearts Foundation (SGF) supports credible and registered CBO within communities to be able to deliver the above services to the community.

Circles of support



Children orphaned or vulnerable (OVC)

- Over 2.8 million children orphaned in South Africa
- Children are vulnerable to poverty, inadequate health, educational and child protection services

Community based organisations (CBO)

Challenges faced by community based organisations include:

- Limited access to financial and material resources
- Skills shortage



SGF however focuses on Health, Education, Information and Nutrition organisations (CBO)

What we do

| | | | | | | | |
|---|--|------------------------------|---|--|--|---|--|
| FUNDRAISING & PARTNERSHIP WITH GRANT-MAKERS FOR CHILD & YOUTH CARE IMPACT | IDENTIFY POTENTIAL SERVICE-DELIVERY PARTNERS (SDP's) | COMPREHENSIVE CAPACITY AUDIT | ROBUST SDP PARTNERSHIP AGREEMENT (ACCOUNTABILITY, CAPACITY DEVELOPMENT) | BUILD GOVERNANCE & MANAGEMENT CAPACITY | MONITORING OF GOVERNANCE, MANAGEMENT & PROGRAMMATIC EFFICACIES | MEASURE IMPACT OF SERVICES DELIVERED, ORGANISATIONAL SUSTAINABILITY | PLAN TOGETHER FOR SUSTAINED / INCREASED IMPACT |
| | | | | IMPLEMENT SYSTEMIC OVC&A PROGRAMMES | | | |
| | | | | PROVIDE FINANCIAL SUPPORT | | | |

Starfish Greathearts Foundation



(Registration number 2003 / 002865 / 08)
Financial statement for the year ended 31 March 2020

Statement of financial position

| Figures in R | Notes | 2020 R | 2019 R |
|-------------------------------------|-------|------------------|------------------|
| ASSETS | | | |
| Non-current assets | 4 | 454 439 | 707 408 |
| Property, plant and equipment | | 454 439 | 707 408 |
| Total non-current assets | | | |
| CURRENT ASSETS | 5 | 24 574 | 30 104 |
| Inventories | 6 | 69 836 | 71 615 |
| Trade and other receivables | 7 | 39 439 | (414) |
| Prepayments | 8 | 5 610 755 | 5 082 899 |
| Cash and cash equivalents | | 5 744 604 | 5 184 204 |
| Total current assets | | | |
| Total assets | | 6 199 043 | 5 891 612 |
| EQUITY AND LIABILITIES | | | |
| Equity | | | |
| Accumulated surplus | | 6 217 081 | 5 735 958 |
| LIABILITIES | | | |
| Current liabilities | 9 | 78 162 | 399 685 |
| Trade and other payables | | (96 200) | (214 061) |
| Deferred income | | (18 038) | 155 624 |
| Total current liabilities | | (18 038) | 155 624 |
| Total liabilities | | | |
| Total equity and liabilities | | 6 199 043 | 5 891 612 |

Starfish Greathearts partners & donors



Starfish Greathearts Foundation would like to thank and appreciate all the partners, stakeholders, donors and funders who have worked with us in the financial year under review. We value your relationship and endeavour to always partner on multi-year, large scale partnerships in the public and private sectors. Without your support we will not be able to achieve our mission.

Corporate donors

Investec
Leo Shipping
Lloyds
My School Card
SA Underwriters
Starlight Media
Ride Joburg 947 Cycle
Challenge
The IQ Business
The Steyn Family Trust

Pro bono donors

ABSA
Burley Boys
Connold and Associates
Ebony and Ivory
Ian Laxton
Newsclip
Pitco Busby
Retroviral
Schindlers Attorneys, Notaries and
Conveyancers
Show Time
Striata PTY LTD
Switch Design Company SA PTY LTD

To all our 235
individual partners:
Thank you for your
continuous support!



The Starfish parable

An old man had a habit of early morning walks on the beach. One day, as he looked along the shore, he saw a human figure moving like a dancer. As he came closer he saw that it was a young woman and she was not dancing but was reaching down to the sand, picking up starfish and very gently throwing them into the ocean.

“Young lady,” he asked, “Why are you throwing starfish into the ocean?”

“The sun is up, and the tide is going out, and if I do not throw them in they will die.”

“But young lady, do you not realise that there are miles and miles of beach and starfish all along it? You cannot possibly make a difference.”

The young woman listened politely, paused and then bent down, picked up another starfish and threw it into the sea, past the breaking waves, saying: **“It made a big difference to that one.”**

Adapted from the story “The Star Thrower” by Loren Eiseley

Starfish focus on giving quality care to each child working from the ground up and ensuring support is sustainable and communities are empowered to tackle the pandemic head on.

Support Starfish and help make a difference one child at a time.



Get involved...



Dinner of Hope
Host a dinner
of hope



Greatheart
Become a sporting
Greatheart



Secure my Future

- Individual Giving
- Corporate Payroll
- Global Giving



**Corporate
Social Investment
(BBB-EE)**

To find out more:

Contact Mpiliso Skosana
Email: media@starfish.org.za
Tel: 083 212 2532
info@starfish.org.za

NPO Registration No. Section 21
Company No. 2003/002865/08
Non-Profit Organisation
No. 039-447-NPO
VAT Registration No. 4490217140

Get in touch



Physical address Old Mutual Building
Corner William Nicol Drive & Leslie Avenue
Design Quarter Fourways 2191

Postal address Postnet Suite #115
Private Bag X9951
Sandton
2146

Website www.starfish.org.za

Email info@starfish.org.za

Registration no 2003/002865/08

NPO number 039-447-NPO

PBO number 93000863

Board of directors S.Manqele
H.Saloojee
E.Kubie
S.Govender-Hlahatsi
T.L Killops
M. Allcock
G.H Allcock



Starfish
GREATHEARTS FOUNDATION
LIFE, HOPE AND OPPORTUNITY